



Opening Hours

8am to 6pm
(last order 5.30pm)



Scan here for menu

All images are for illustration purposes only.
Prices are subject to prevailing GST and Service Charge.
The Management reserves the right to amend the items
and prices without prior notice.

HEARTY SALAD

- NEW

1

Fresh Tropical Fruit Salad with Honey Pommery Mustard Dressing

6
- NEW

2

Green Apple, Celery, Walnut with Fruit Yoghurt

6

LOCAL BREAKFAST

- NEW

3

Braised Peanut with Cuttle Fish Porridge

5
- NEW

4

Century Egg with Chicken Porridge

5
- NEW

5

Vegetarian Bee Hoon with Mock Char Siew

6

LIGHT MEAL

- NEW

6

Chicken Mushroom vol-au-vent

7.5
- NEW

7

Pan-fried Chicken Ham, Cheese Tomato Sandwich with Mixed Salad

6.5
- NEW

8

Cheese Mushroom on French Loaf

6
- 9

Toast Set with Coffee or Tea (traditional toast bread with kaya, butter & 2 soft boiled eggs) *Nutella

4.8 / 5.1*
- NEW

10

Thick Toast Set Coffee or Tea (peanut butter, chicken floss & 2 soft boiled eggs)

5.5
- 11

Toast Set with Coffee or Tea (traditional toast bread with kaya, butter) *Nutella

3.8 / 4.1*
- 12

Thick Toast Set Coffee or Tea (peanut butter, chicken floss)

4.5
- 13

Two Slices of Toast (butter kaya/ peanut butter/ *Nutella)

2.3 / 2.6*
- 14

Chicken Nuggets with Fries (serving from 11am-3pm, last order 2.30pm)

6
- 15

French Fries (serving from 11am-3pm, last order 2.30pm)

4

BEVERAGE

- | | hot | cold |
|--|-----|------|
| 16 Local Brewed Coffee/Tea w/o Milk | 1.5 | 1.9 |
| UPSIZED 17 Local Brewed Coffee/Tea with Milk | 2.2 | 2.1 |
| UPSIZED 18 English Tea (English Breakfast/Earl Grey Tea/Chamomile) | 2.5 | |
| 19 Lipton Tea (Yellow Label) | 2.5 | - |
| 20 Milo | 1.8 | 2.2 |
| 21 Yuzu Fizz | - | 3.8 |
| 22 Honey Lemon | 2.5 | 2.8 |
| 23 Homemade Iced Lemon Tea | - | 2.8 |
| 24 Bottled Mineral Water | - | 1.5 |
| 25 Canned Drinks | - | 2 |
| 26 Coke Float | - | 3.5 |
| 27 Sprite Float | - | 3.5 |
| 28 Rootbeer Float | - | 3.5 |
| 29 Iced Milo Float | - | 3.5 |

NESCAFE

- | | | |
|--------------------|-----|---|
| 30 Coffee w/o Milk | 1.8 | - |
| 31 White Coffee | 2 | - |
| 32 Cappuccino | 2.8 | - |
| 33 Latte | 2.8 | - |
| 34 Mocha | 3.2 | - |



1
Fresh Tropical Fruit Salad with
Honey Pommery Mustard Dressing



2
Green Apple, Celery, Walnut with Fruit Yoghurt



3
Braised Peanut with Cuttle Fish Porridge



4
Century Egg with Chicken Porridge



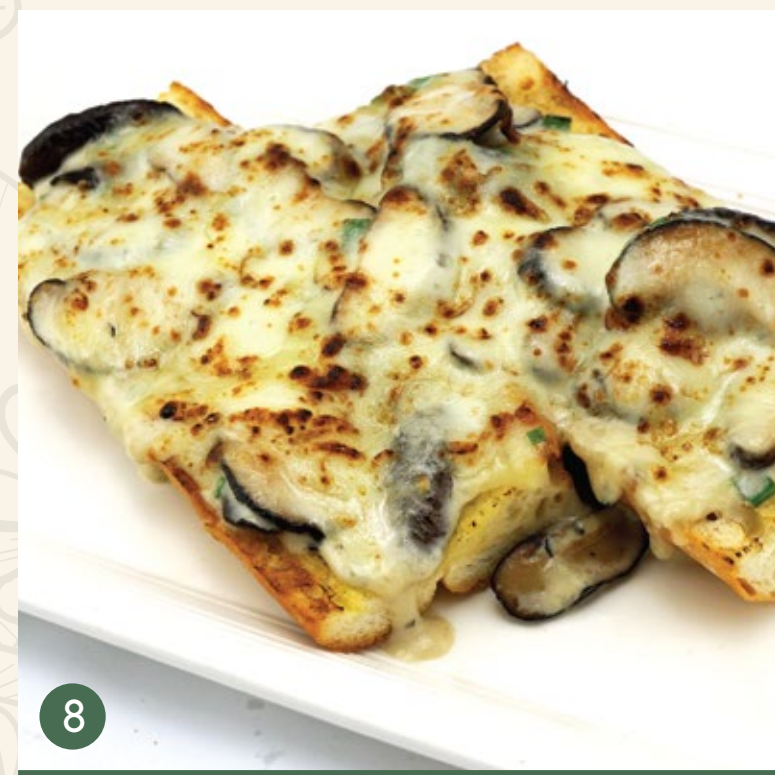
5
Vegetarian Bee Hoon with Mock Char Siew



6
Chicken Mushroom vol-au-vent



7
Pan-fried Chicken Ham, Cheese Tomato
Sandwich with Mixed Salad



8
Cheese Mushroom on French Loaf



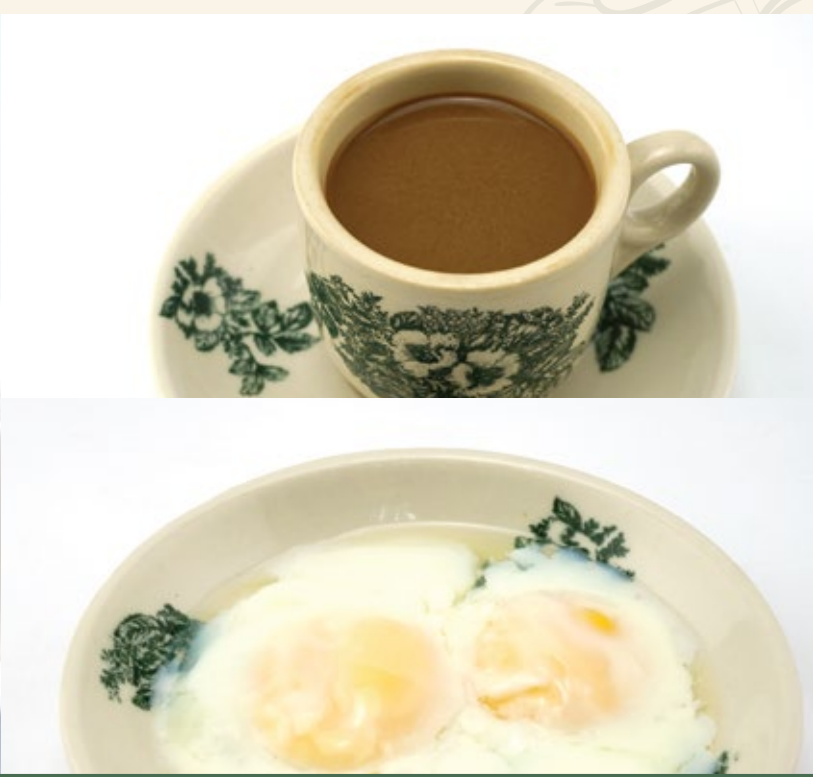
14
Chicken Nuggets



15
French Fries



9
Toast Set with Coffee or Tea (traditional toast bread with kaya, butter & 2 soft boiled eggs)



10
Thick Toast Set Coffee or Tea (peanut butter, chicken floss & 2 soft boiled eggs)

